

PART OF N. 1/2 OF SEC. 9, T.6 N., R.1 W., S.L.B. & M.
MOUNTAIN ROAD ESTATES NO. 2
 IN OGDEN CITY

152

TAXING UNIT 25

PREFIX 11-152

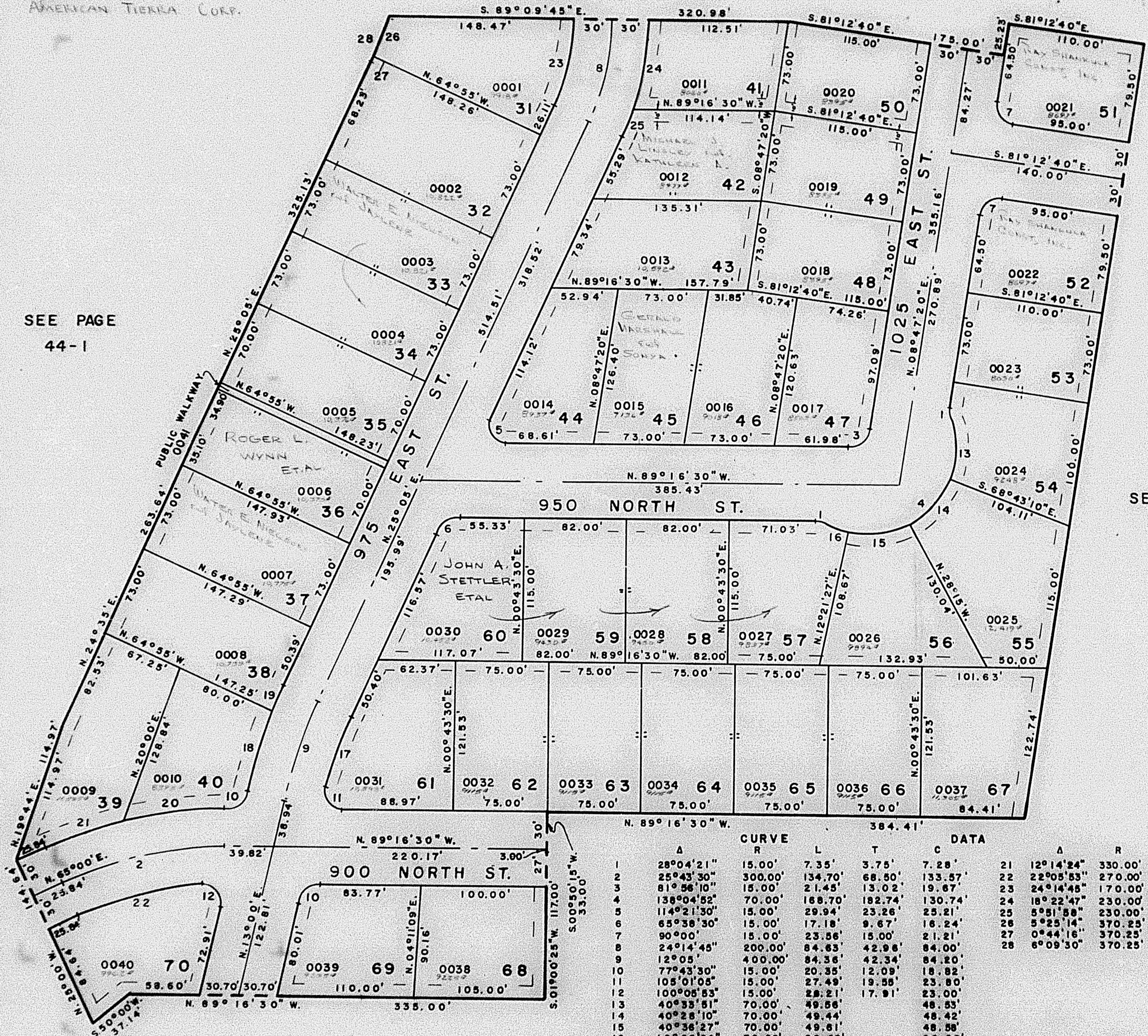
SCALE 1" = 60'

SEE PAGE 132

AMERICAN TIERRA CORP.

SEE PAGE
44-1

SEE PAGE
44-1



CURVE	DATA			
	A	R	L	C
1	28°04'21"	15.00'	7.35'	3.75'
2	25°43'30"	300.00'	134.70'	68.50'
3	81°56'10"	15.00'	21.45'	13.02'
4	138°04'52"	70.00'	168.70'	182.74'
5	114°21'30"	15.00'	29.94'	23.26'
6	65°38'30"	15.00'	17.18'	9.67'
7	90°00'	15.00'	23.56'	15.00'
8	24°14'45"	200.00'	84.63'	42.98'
9	12°05'	400.00'	84.36'	42.34'
10	77°43'30"	15.00'	20.35'	12.09'
11	105°01'05"	15.00'	27.49'	19.55'
12	100°08'53"	15.00'	28.21'	17.91'
13	40°35'51"	70.00'	49.56'	48.53'
14	40°28'10"	70.00'	49.44'	48.42'
15	40°36'27"	70.00'	49.61'	48.58'
16	16°28'24"	70.00'	20.08'	20.02'
17	9°20'25"	370.00'	60.32'	60.25'
18	9°04'13"	430.00'	68.07'	68.00'
19	3°00'47"	430.00'	22.61'	22.61'
20	13°29'06"	330.00'	77.87'	77.49'

SEE PAGE 44-1